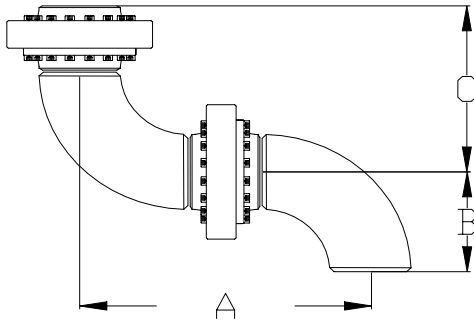


STYLE 50 SWIVEL



- All dimensions and weights are approximate.
- Dimensions noted in inches, weight in pounds.

████████ Consult factory for further details

Size	D2000				D1070				D2001			
	"A"	"B"	"C"	Weight	"A"	"B"	"C"	Weight	"A"	"B"	"C"	Weight
2"	9.86"	3"	6.86"	27.9	11.31"	3"	8.31"	23.2	11.31"	3"	8.31"	39.2
3"	12.86"	4.5"	8.36"	41.34	14.75"	4.5"	10.25"	43.6	14.75"	4.5"	10.25"	43.6
4"	15.86"	6"	12.86"	58.36	19.19"	6"	13.19"	73.8	19.19"	6"	13.19"	73.8
6"												
8"												
10"												
12"												
16"												
20"												
24"												

Size	D0002				D1010				D0116			
	"A"	"B"	"C"	Weight	"A"	"B"	"C"	Weight	"A"	"B"	"C"	Weight
2"									6.13"	3.13"	5.63"	6
3"									8.38"	3.88"	7.44"	12
4"									9.31"	4.75"	8.13"	16
6"	24.3"	9"	15.3"	132	27.65"	9"	18.65"	198				
8"	31.09"	12"	19.09"	241.6	34.83"	12"	22.83"	337.6				
10"	37.87"	15"	22.87"	378.8	40.43"	15"	25.43"	496.8				
12"	44.66"	18"	26.66"	560	47.65"	18"	29.65"	806				
16"	57"	24"	33"	898	60.01"	24"	36.01"	1184				
20"					72.83"	30"	42.83"	1698				
24"												

End Connections

Size	150# Flange		Female NPT	
	OAL	Weight	OAL	Weight
2"	2.5"	9	1.3"	0.7
3"	2.75"	14	1.5"	1.6
4"	3"	16	1.7"	3.1
6"	3.5"	25		
8"	4"	40		
10"	4"	56		
12"	4.5"	86		
16"	5"	141		
20"	5.69"	188		
24"	6"	270		