



The B0028 Marine Loading Arm is designed especially to meet the needs of barge transfer and river boats installations with marginal (low) tidal variation.

The B0028 Marine Loading Arm is of self supporting design, counterweight balanced, with separated and direct linked counterweights for inboard- and outboard arm for easy, manually operation.

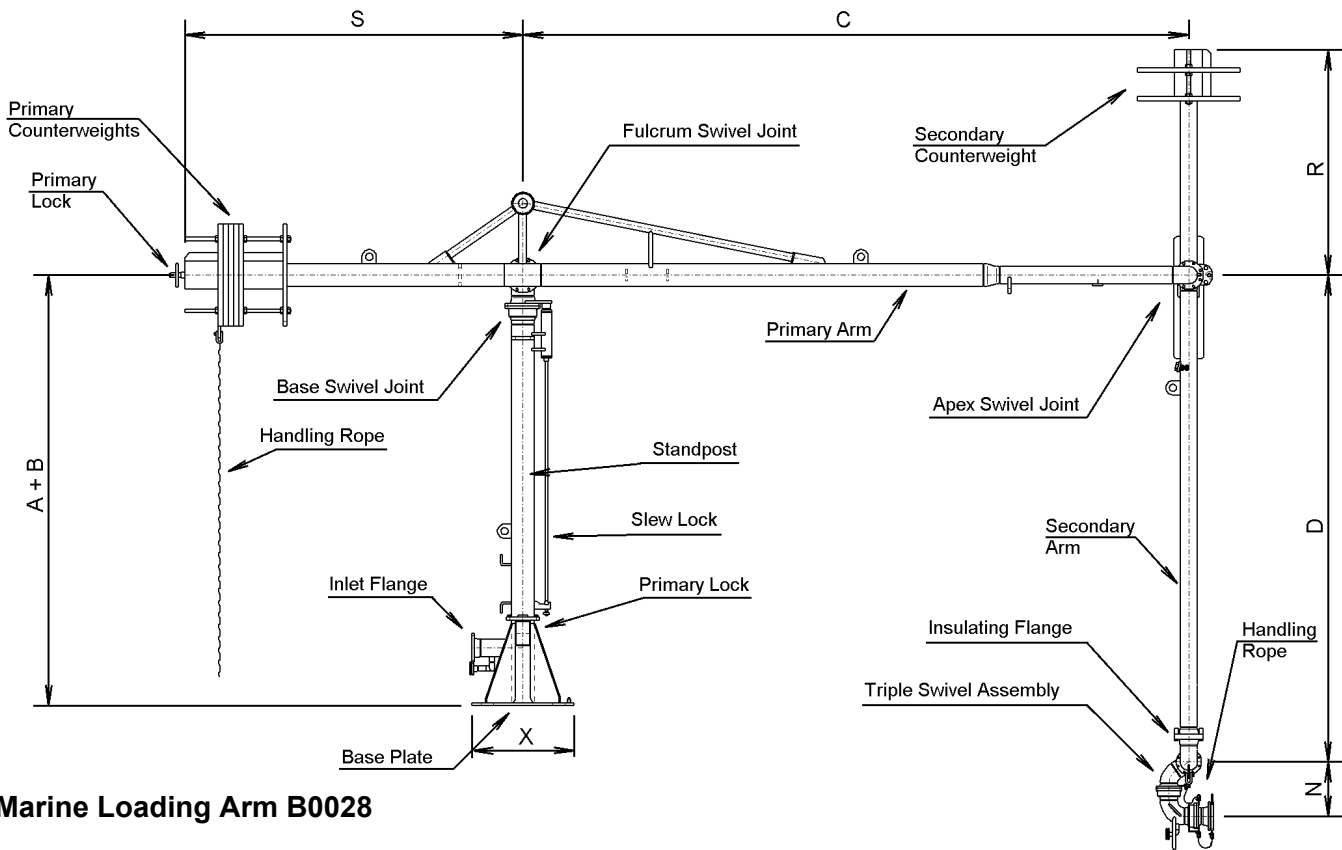
The B0028 is available:

- ◆ in sizes from 4" up to 10"
- ◆ for pressure rates from PN 10 up to PN 40
- ◆ materials: carbon steel, low temperature steel, stainless steel
- ◆ for all products
- ◆ for temperature range of -50 °C up to +200 °C

For any deviations we shall be glad to offer you individual solutions.

Its low cost and ease of handling in all operational, manoeuvring and maintenance position makes it an economic alternative to hose loading installations (e.g. no need for crane and minimum man power). Further advantages are provided by high safety standards, reliability and lowest maintenance cost.

Additional equipment is available



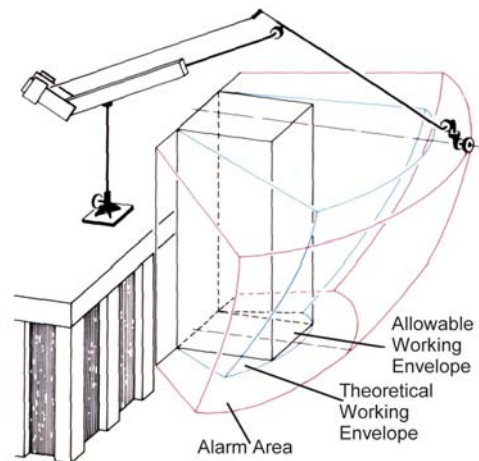
Marine Loading Arm B0028

TYPICAL DIMENSIONS, WEIGHTS AND BENDING MOMENTS

Size inch	Stand Pos Height mm	X mm	C mm	D mm	N mm	S mm	flow rate m ³ /h	weight KN	bending moment KNm
4"	4 000	1 000	5 500	5 500	590	3 000	300	40	65
6"	4 000	1 000	5 500	5 500	590	3 000	600	40	65
8"	4 000	1 000	6 500	6 500	740	3 000	1 100	57	90
10"	5 000	1 000	7 500	7 500	890	4 000	1 700	72	170

Design:

- ◆ Fully balanced with independent counterweights for inboard- and outboard arm
- ◆ self supporting system (low weight and less man power)
- ◆ plain construction
- ◆ for transfer of all products, e.g. mineral oil, chemicals, liquefied gases
- ◆ available in carbon steel, low temperature steel and stainless steel
- ◆ swivel joints either as welded-in or flanged version
- ◆ seals available in Buna-N, Viton, PTFE or any other specific material depending on application
- ◆ pressure rates of PN 10 to PN 40 or any other international standards. Higher pressure rates are possible
- ◆ temperature range from -50 °C (e.g. LPG) to +200 °C (e.g. Bitumen). Other temperature criteria are possible.



Typical Accessories:

Vacuum Breaker	Envelope Warning System	Insulating Flange
Nitrogen Purge Line	Purge Line	Hydr. Operation
Drainage Connections	Manual Quick Coupler	

EMCO WHEATON
A Gardner Denver Company

B0028_e - GDI/hsc

Whilst the content of this leaflet has been edited with the greatest care, we are not liable for any errors or omissions

EMCO WHEATON
GmbH

Emcostr. 2 – 4 D - 35274 Kirchhain, Germany
Tel.: +49 (0) 6422 84-0 • Fax : +49 (0) 6422 5100
sales@emcowheaton.com • www.emcowheaton.de