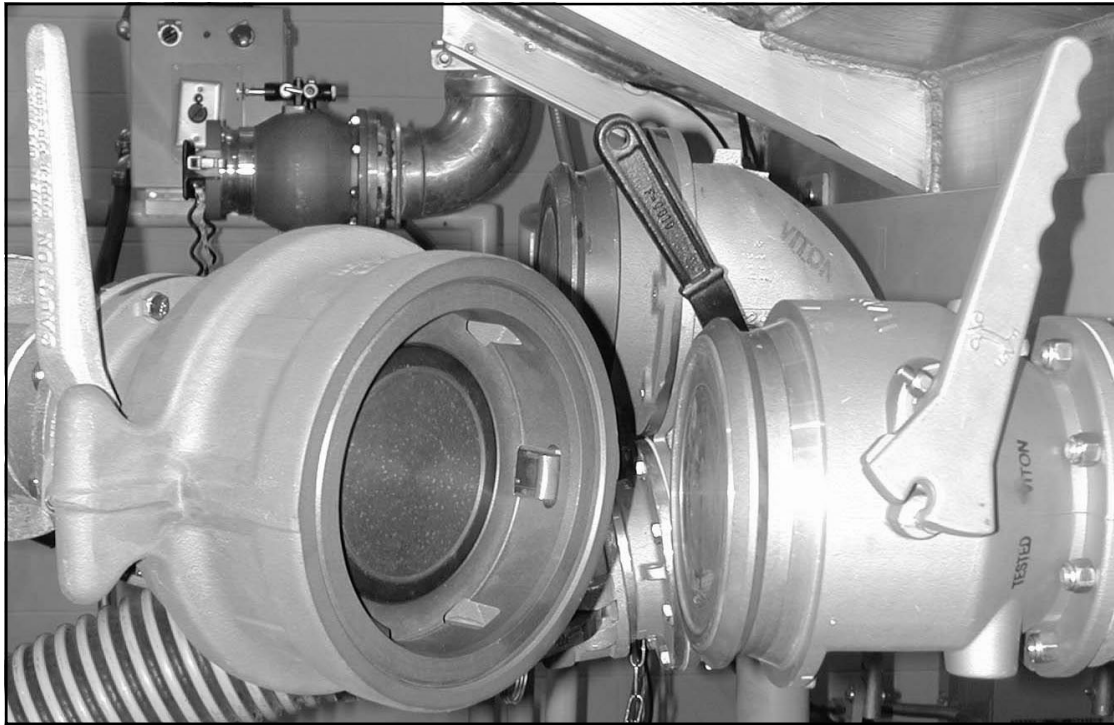


J451 API BOTTOM LOADING COUPLER



- Quality forged aluminum lever provides long lasting strength
- Seal and gaskets contained in recessed cavity for tight seal
- Roller bearing in operator lever assures easy and smooth open/close action. Eliminates jamming or kick-back
- Easy to use grasp handles
- Up to 200 PSI pressure capability on select models*
- Connects to 4" Tank Truck Flange
- Weight = 18.2 lbs (8.26 kg.)

*200 PSI pressure rating when coupler is in the closed position is proof of the design and integrity of the coupler. This is not a system design recommendation and only refers to the coupler.

EMCO WHEATON™

A SYLTONE COMPANY



2501 Constant Comment Place
Louisville, KY 40299-USA

Tel: (800) 285-3626

Int'l: +1 (502) 266-8767

Fax: +1 (502) 266-5873

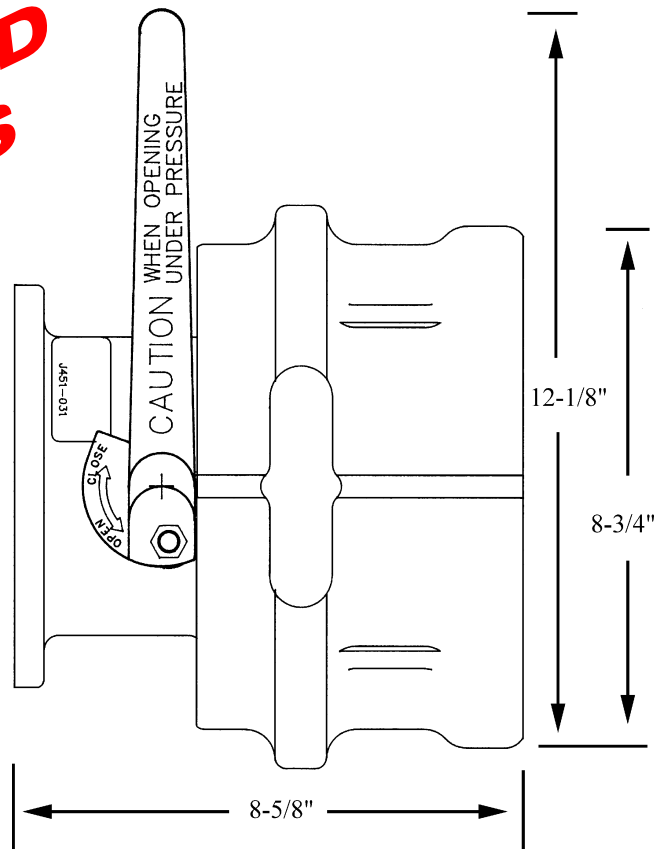
email: sales@syltone.com

Web: www.emcowheaton.com

J451 API BOTTOM LOADING COUPLER

PART NO.	DESCRIPTION	WEIGHT	WORKING PRESSURE
J0451-031	4" API Coupler with HP Viton seals	18.2 lbs	75 PSI
J0451-022	4" API Coupler with Buna seals	18.2 lbs	75 PSI
J0451-023	4" API Coupler with Chemraz seals	18.2 lbs	75 PSI
J0451-046*	4" High Pressure API Coupler with HP Viton seals	18.2 lbs	200 PSI
J0451-045*	4" High Pressure API Coupler with Buna seals	18.2 lbs.	200 PSI

**INDUSTRY STANDARD
FOR OVER 25 YEARS**



EMCO WHEATON™

A SYLTONE COMPANY



2501 Constant Comment Place
Louisville, KY 40299-USA
Tel: (800) 285-3626
Int'l: +1 (502) 266-8767
Fax: +1 (502) 266-5873
email: sales@syltone.com
Web: www.emcowheaton.com